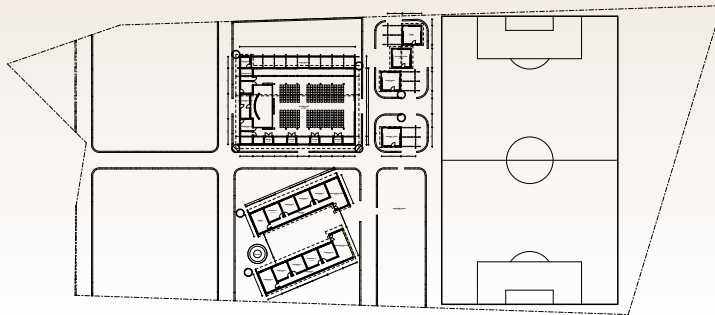


## Emmaus Church Community Centre Plans

We are excited to share that Gary Van Lieshout, the architect commissioned to draw up plans for our Church Community Centre in Emmaus, has completed the task. The Arise team - including the board members - as well as Pastor Musa and Pastor Mazibuko, have reviewed the designs and are very happy with them. The plans include a large multifunctional hall, two accommodation blocks, a cookhouse, a few shops and a soccer field. (See plans below). This means we can now go forward by presenting the building work to various partners and interested parties. Who will then be able to select what specific project/building they would like to take responsibility for (from a financial through to construction standpoint).

In the near future, God willing, further details will be put on our website regarding specific projects.



Architectural Plans for the Emmaus Church Community Centre



## CAEDEN

### Our little Miracle boy

Just over a month ago, now, our family suffered a tragic loss. Caeden, son of Carmen Pretorius - the Social Resources Manager for Arise MG - went to be with Jesus. Born with spina-bifida and hydrocephalus, Caeden had overcome many obstacles in his short life and was doing exceptionally well. He then became ill. Doctors struggled to diagnose what was wrong. And surprisingly, due to complications from a blocked shunt, he passed away in hospital the evening of May 20.

**The family have been devastated but continue to find their strength and hope in the arms of a loving God.**

Caeden brought much sunshine and happiness into our lives for the 20 months he was on loan to us. And we will miss him terribly. But our faith remains in God, we praise him in the midst of the storm, and we trust that on the great resurrection day we will see Caeden again.

In honour of Caeden, the DNA (Do Not Abort) Foundation has been started by Carmen >>> See [www.arisemg.org.za](http://www.arisemg.org.za) for more information.

## TRAINING

Training is underway for the staff at the play centre in Emmaus. Cheryl has taken Nomalanga, head of the TLC nursery school in Troyeville, to impart some of her knowledge from her many years of experience.

## SA Chinese Covenant Church

We look forward to taking a delegation from the SA Chinese Covenant Church in Edenvale (SACCC) down to Emmaus early in July. We appreciate their continued support of the work and look forward to showing them what their contributions are accomplishing.

# Trip to Emmaus

We just recently returned from our latest trip to Emmaus (30 May – 4 June). This time more of us were able to go. Don, Cheryl, Richard, Carmen, Brent and little Jordan made the 450 km journey. The double –cab bakkie (Truck), with attached trailer, was filled to capacity transporting a whole variety of goodies. Pastor Musa and the church folk were happy to see us just as we were happy to see them. Thank the Lord, the tent was still standing strong and proving to be very useful for the work. The play- centre continues to run effectively, now going into its fifth month of operation. Thanks to a number of ladies, particularly from Northcliff Union Church, who knitted fervently; the play centre children each received a warm jersey and beanie to see them through the winter. Further resources for the play-centre were also handed over including children's books, floor mats, more toys etc.

A substantial donation of Croc shoes, as well as some blankets, were distributed amongst the adults. Which should prove very useful to the recipients. We also managed to set up a showing of the Jesus film which ±50 people watched intently. During our trip God surprised us by touching the heart of the man we were buying maize meal from. Without any encouragement on our part he decided to donate the 12 bags (weighing 150 kg) free of charge. Another local business owner selling high-quality, hand-woven rugs and carpets, has donated his excess wool to Arise for a number of months already. He recently let us know he is willing to train three or four disadvantaged woman in weaving wool as a means to job creation.

**A substantial donation of Croc shoes, as well as some blankets, were distributed amongst the adults.**



A lady trying on a pair of Croc shoes

**The play-centre continues to run effectively, now going into its fifth month of operation.**

We, once again, met with the local king to inform him of the status of our work in the area. He and his leadership team said that they were happy to have us working in their communities and would like us to do more work in the future in other areas within their constituency.

Our week away was an important and difficult one for us as a family. Upon our arrival in Winterton on the Sunday we buried Caeden's body in a local cemetery. Carmen and Brent had decided to go there as the area is a special place for them both. Through God's provision, we stayed in a wonderful time-share establishment called Cayley Lodge. Despite it being a work week and one filled with good ministry - we were fortunate enough to have some rest and much needed family time - and for this we are truly grateful to the Lord.



Children at the play-centre

## Arise Prayer Requests

### General:

- ▣ Carmen, Brent, Jordan and the rest of the family dealing with the loss of Caeden.
- ▣ Arise Staff (Including personal financial support needs)
- ▣ Bookkeeper needed

### Emmaus project:

- ▣ Current Tent – that seasonal winds won't damage it.
- ▣ Teachers, staff, and children at the play centre
- ▣ Food supply for children at the play centre
- ▣ Christian literature for the children

### Hidden Treasure Shop:

- ▣ Storeroom (we are in big need of a place to store and sort all the donated goods that arrive for the shop)
- ▣ Volunteers to assist in the shop

### Volunteer Missionaries:

- ▣ Mark and Sara Williams; & Bobby and Margie Jones (For documentation & financial support as they seek to leave the U.S.A. and join us in South Africa in the next few months)